



TEMPLANT
Rental Power

2025 COMPANY PROFILE

Templant Hire Ltd

Generators ● Fuel Tank ● Cable ● Distribution
● Load Bank ● Stage V ● Battery Energy Storage

Call Us : 0333 240 0872

rental@templant.co.uk | templant.co.uk

Choose Templant , Power With Confidence



Contents

3 About Us

Discover our history, mission, and vision, along with our commitment to delivering reliable and efficient rental solutions for your projects.

4 Our Rental and Services

Welcome to our comprehensive range of generator rental services designed to meet all of your power needs with reliability and efficiency.

7 Our Respected Partners

Our esteemed partners place their trust in us to provide reliable and efficient generator rental services. We take pride in serving a diverse range of clients, each relying on our expertise to ensure seamless power solutions.

8 Carbon Cut Commitment

Our comprehensive strategy to drastically reduce CO2 emissions and enhance sustainability across both our operations and those of our clients.

10 Case Studies

These real-world examples showcase our expertise, reliability, and commitment to delivering exceptional power solutions tailored to meet diverse needs.



OUR MISSION

Templant is committed to delivering exceptional emergency response and power solutions through a steadfast dedication to reliability, innovation, and sustainability. We aim to exceed customer expectations by providing superior service with a strong focus on reliability. Our 24/7, 365-day emergency response capability ensures we are always ready to support our clients with immediate deployment.

OUR VISION

At Templant, we envision becoming the foremost provider of temporary equipment rentals in the south east, celebrated for our dependability, innovation, and outstanding service. Our team of skilled professionals are committed to delivering customized, high-quality services, ensuring our clients' projects operate smoothly and efficiently. As we expand and integrate the latest technologies, we aspire to set the industry benchmark for excellence, providing unmatched customer satisfaction and driving success in every project we support.

About us,

Leading the Way in Temporary Equipment Rentals Across the UK

Established in 1989, we have grown to become a leading provider of temporary equipment rentals across the UK.

Our extensive range of high-quality rental solutions including generators, distribution boards, cables, and fuel tanks, catering to a diverse array of sectors and applications.

With over three decades of industry experience, we have built a solid reputation for reliability, innovation, and exceptional customer service.

Our expertise ensure that our clients' projects run smoothly and efficiently. Committed to excellence, we continually invest in the latest technologies and maintain a fleet of equipment that meets the highest standards of safety and performance.

Our team of experienced professionals is dedicated to delivering tailored solutions that meet the specific requirements of each client, ensuring optimal performance and peace of mind.

Our Rental

Welcome to our comprehensive range of rental services designed to meet all your power needs with reliability and efficiency.

We manage a diverse fleet of generators, each tailored to specific operational needs with top brands like BGG, JCB, CAT, and Atlas Copco. Each providing reliable performance under continuous and standby operation.

Stage IIIa + V Generators



13- 1500kVA

MV + HV Packages



Battery Energy Storage



5/15kWH , 10/20kWH ,
30/45kWH , 45/90kWH

Load Bank Hire



420kW , 600kW,
1000kW, 2.5 mVA

DEF Tank Hire



500L - 2000L

Tank Hire



1000L - 9000L

Cable Hire

16 Amp Single
Phase to 240mm
P/L Cable



Distribution Hire

16 Amp to
6300 Amp



Our Services

We pride ourselves on being more than just a generator rental provider.

Our extensive range of services ensures that our clients receive a comprehensive turn key solution tailored to their specific needs. Whether you're planning an event, managing a construction project, or ensuring the smooth operation of critical infrastructure, we have you covered with the following services.



Remote Monitoring

We track your generator's performance in real-time, ensuring optimal operation and early issue detection.



24/7 Support

Our support team is available anytime to resolve issues and provide assistance promptly.



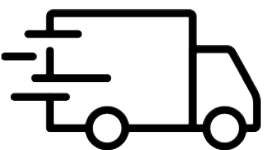
Contingency Plan

For unplanned power failures, whether it's to ensure business continuity, meet compliance and insurance requirements, or simply for your peace of mind, our plans are tailored to suit your specific needs.



Fuel Monitoring

We monitor fuel levels and usage, coordinating timely refueling to keep your generators running smoothly.



Transport

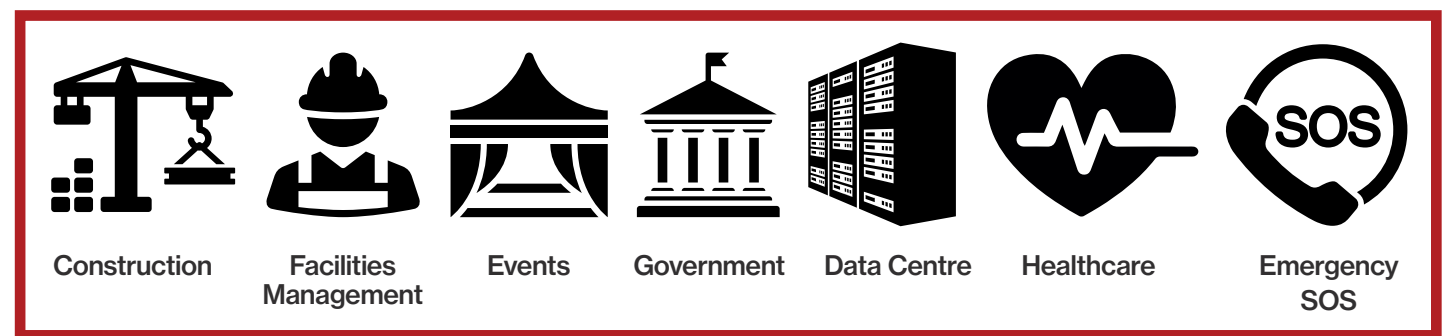
We ensure the secure and timely delivery of your generators, handling all logistics from start to finish.



Installation

Our technicians ensure seamless setup and configuration of your generators, ready for immediate use.

We are committed to providing a 24/7, 365-day emergency response service! We have a 24hr manned site, stocked inventory ready for immediate deployment.



"In our industry, success depends on the reliability and performance of our equipment. As Operations Director, I ensure every piece we rent meets the highest standards of safety and efficiency. We provide not just equipment, but peace of mind.

By fostering continuous improvement, we deliver unparalleled service and support. Our dedicated team guarantees our clients stay powered and their operations seamless, regardless of the challenge."



Chris Allen
 Operations Director
 M - 07540 952253
 E - Chris.Allen@templant.co.uk

Key Innovation

Stage V Generators

We have invested heavily into Stage V, the most recent advancement in carbon emission control standards.

By embracing Stage V compliance, we are significantly reducing our clients carbon footprint and leading the way in sustainable industry practices.



Battery Solutions

Our advanced battery solutions seamlessly integrate with any generator, providing a hybrid system that optimizes efficiency. By working in conjunction with a generator, our batteries reduce the generator's runtime, leading to significant fuel cost savings and lower emissions.



Fuel

In partnership with SulNOxEco™ Diesel Conditioner, we are pioneering advancements in the generator market. This cutting-edge conditioner optimizes combustion efficiency, resulting in up to a 14.5% reduction in fuel consumption. Furthermore, it significantly mitigates environmental impact by decreasing CO2 emissions by over 26% and reducing particulate emissions by more than 96%.



Carbon Cut Commitment

Pioneering Environmental Sustainability

At Templant Rental Power, our "CarbonCut Commitment" embodies a comprehensive strategy to drastically reduce CO2 emissions and enhance sustainability across both our operations and those of our clients.


This initiative focuses on adopting eco-friendly generator technologies, investing in renewable energy sources, and implementing energy-efficiency practices. Our plan includes educating staff and clients on sustainable operations, utilizing software to monitor and reduce our carbon footprint, and collaborating with clients to provide rental solutions that minimize environmental impact.

Additionally, we are exploring partnerships with environmental organizations to support renewable energy projects, aiming for significant contributions to carbon offsetting.

We are dedicated to driving innovation in sustainable power solutions, working closely as a team to lead the power production industry toward a greener, more sustainable future. We strive to ensure that our collective efforts positively impact the environment and society, emphasizing our shared commitment to reducing CO2 emissions and tackling environmental challenges.





 Building 694 Courtney Way, Heathrow Airport, Hounslow, TW6 1RU
SECTOR: Aviation Sector

HEATHROW AIRPORT TERMINAL 3

Efficient Deployment of Six 500kVA Generators
in Limited Space for Chiller Unit Power



KEY FACTS

- **Tight Project Timeline:**

The entire project, from planning to execution, was completed within a tight timeframe of just three days, requiring meticulous coordination with Heathrow Operations and the Police to ensure for efficient deployment to avoid any downtime for the terminal.

- **Heavy Power Requirements:**

The implementation of a six-generator sync system to support the external chillers involved overcoming substantial power demands and ensuring a seamless and reliable power supply, with backup generators on standby to manage potential failures and maintenance needs.

- **Limited Space:**

The installation and operation of the additional generators and chillers had to be managed within the constrained space available at the airport, necessitating strategic placement and efficient use of the available areas. Unloading with HIAB cranes also posed challenges due to height restrictions, requiring the equipment to be boomed close to the ground and carefully manoeuvred into position.

The Assignment

At Heathrow, the busiest airport in the UK, Terminal 3 faced a need for additional chillers. This terminal, which spans 98,962 square meters and saw 2.8 million passengers on 28,288 flights in 2021, requires substantial cooling to ensure for the proper functioning of sensitive equipment and IT systems, the preservation of perishable goods, the support of baggage handling systems, and the operation of essential services.

To address the challenge of powering these additional chillers, Heathrow required an external power supply, as constructing an additional mains power source large enough to meet the demand was not viable.

The use of extra chillers ensured that the terminal could continue to operate smoothly in the event of a breakdown of any chiller unit. Moreover, the availability of these additional chillers allowed for the servicing and maintenance of existing units without impacting the terminal's operations.



Equipment List

- **Generators**
 - 6 x 500 kVA Generators
- **Fuel Capacity**
 - 18,000L Total Tank Capacity
- **Cables**
 - 1500 meters of various cable
- **Distribution Units**
 - 1 x 3200 A Mains Distribution Panel
 - 2 x 1600 A Mains Distribution Panel
- **Other Equipment**
 - 50m of Cable Ramp
 - 6 x 3m Exhaust Flue
- **Vehicles**
 - 6 x Trucks with Hiabs
- **Personnel**
 - 8 x Generator Engineer
 - 5 x Electrician
 - 6 x HGV Drivers

The Plan

Our approach at Templant Rental Power began with an extensive pre-site evaluation to precisely gauge the current and anticipated power requirements. We planned to install six 500kVA generators, each equipped with an advanced load-sharing system. This system intelligently manages the power load, activating generators based on fluctuating daily requirements and shutting them down during low-demand periods to conserve fuel.

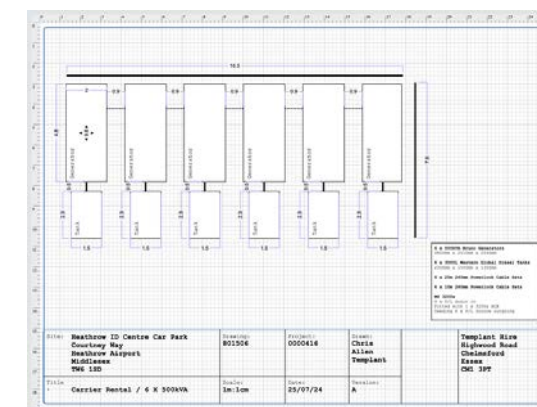
Our plan included strategic placement of components, efficient cable routing, comprehensive risk assessments, and detailed lifting plans. We also established procedures for streamlined HVO refuelling operations and incorporated remote monitoring capabilities to enhance both reliability and operational flexibility.

The Result

Our project execution exemplified our efficiency and dedication to delivering reliable power solutions, with a strong emphasis on safety. Within just three days of our initial meeting, we effectively coordinated with all involved parties to organise the installation. Everything was set up, and the generators were operational within 24 hours, from Friday to Saturday.

We upheld the highest safety standards through meticulous risk assessments, detailed lifting plans, and comprehensive method statements, all of which required approval from Heathrow operations before commencement.

The integration of the six-generator system was a pivotal achievement, meeting the terminal's heavy daily power requirements. Four of our generators, providing a combined 2000 kVA, powered the four external chillers, while the remaining two generators, each 500 kVA, were kept on standby to handle any failures, power surges, or maintenance needs for the primary generators. To ensure optimal performance, we conducted 48-hour daily visits and provided 24/7 support with engineers and phone technicians.





Unit 5, Haverhill Business Park, Haverhill CB9 7FD

SECTOR: Pet food and animal feeds

KATKIN PET FOOD FACTORY

Efficient Dual 500kVA Generator Installation
for Optimal High and Low Load Power
Management



KEY FACTS

- Complex Installation Requirements:

The project entailed installing two 500kVA generators and a 5000L fuel tank, demanding precise planning and execution. This complex setup was crucial for meeting the specific power needs of the facility without disrupting ongoing operations.

- Efficient Power Management

We implemented a dual-generator system with an automatic load switch, ensuring energy-efficient operation. This system automatically adjusts between the generators based on load demands, using only one generator for lower loads and both during peak usage, optimising fuel and power efficiency.

- Rapid and Efficient Installation

A key challenge was the swift and efficient installation to minimize factory downtime, especially critical due to the presence of chiller and freezer units. Our team's expert coordination and quick execution ensured the installation was completed within timelines, preventing any potential disruption or spoilage of products.

The Assignment

In Haverhill, a prominent cat food manufacturer, situated 19 miles from Cambridge, encountered a critical challenge. Occupying a substantial facility of 44,520 square feet for warehousing and 2,948 square feet for office operations, they faced a power supply inadequacy for their specialised machinery. Despite the 275 kVA power supply typically sufficing for commercial uses, it fell short for the manufacturer's high-demand equipment. Given the high costs and lease restrictions, upgrading the facility's power infrastructure was impractical. Therefore, a bespoke, independent power solution was imperative to sustain their production.

The paramount challenge for this project was ensuring a stable and uninterrupted power supply capable of handling both peak and minimal load demands, essential for maintaining continuous production and operational efficiency in this manufacturing environment.

Factory Manager at Katkin

"To address power shortages at our Haverhill cat food factory, we installed two 500kVA generators, ensuring continuous, efficient production without downtime. This solution supported our specialized machinery's needs, showcasing our commitment to innovation and operational reliability."

Equipment List

2 x 500 kVA
Generators

5000L Total Tank
Capacity

5 x 25 metres 240mm
lug to lug cables

MDU 2000
Distribution Panel

The Plan

Our approach at Templant Rental Power began with an extensive pre-site evaluation to precisely gauge the current and anticipated power requirements, considering any future expansion or machinery addition. We plan to install a pair of 500kVA generators, each equipped with an advanced load-sharing system. This system intelligently manages the power load, activating the second generator as per the fluctuating daily requirements and shutting it down during low-demand periods to conserve fuel.

Our plan encompassed strategic placement of components, efficient cable routing, comprehensive risk assessments, and security measures. We also established procedures for consistent system testing, streamlined refuelling operations, and remote monitoring capabilities, enhancing both reliability and operational flexibility.

The Result

Our project execution showcased our commitment to delivering dependable power solutions with an emphasis on safety and security. We established a fortified perimeter around the generator setup and maintained high safety standards during installation. The integration of the dual-generator system was a pivotal achievement due to the daily heavy power requirements. This solution not only addressed the immediate power needs of the cat food manufacturer but also aligned with their long-term goals for continuous production and operational efficiency, demonstrating our expertise in tailoring power solutions to complex industrial requirements.

OUR DSE - LOAD SHARING AND SYNCHRONIZING UNIT

The DSE8610 MKII is a top-tier control module designed for synchronising and managing multi-generator load-share systems. Capable of handling up to 32 generators, both electronic and non-electronic, it ensures seamless power distribution and synchronisation. Its robust monitoring system tracks operational status and detects faults, automatically starting or stopping generators based on load demands or anomalies. This makes it highly efficient and reliable for critical power management in diverse applications.





DP World London Gateway, Stanford-le-Hope SS17 9DY

SECTOR: Ready-mix concrete supplier

AGGREGATE INDUSTRIES

Install of a 500kVA Generator alongside a 30/40 battery pack, seamlessly switching between them for optimized power usage.



KEY FACTS

• Complex Installation Requirements:

The project involved the intricate installation of a 500kVA generator, 5000L fuel tank and a 30/40 battery pack, necessitating careful planning and execution.

• Efficient Power Management:

Integrating a 30/40 battery pack with a manual and automatic changeover panel for seamless switching between the generator and the battery pack, to optimise power usage according to varying load.

• Rapid and Efficient Installation:

A significant challenge was to execute the installation swiftly and efficiently, ensuring minimal downtime and disruption to the plant's operations. This required precise coordination and expert handling of the equipment to meet the tight timelines.

The Assignment

Situated along the Thames River, this prominent aggregates company is a national leader in producing and supplying eco-friendly construction materials. Located within DP World London, the company has experienced significant growth in recent years. However, this expansion has outpaced the development of essential infrastructure, including connections to the national grid. To remain operational, the company relies on an independent power supply.

Originally, Aggregate Industries used a standard generator, but a fuel consumption analysis revealed the potential benefits of integrating a battery pack. The primary challenge was to ensure uninterrupted power supply during the upgrade from the conventional generator to a more efficient hybrid system. This upgrade was critical not only for maintaining operational continuity but also for aligning with the company's commitment to sustainability and reduced fuel consumption. The focus was on seamlessly executing this transition while adhering to the site's environmental goals.

Technician at Aggregate Industries

"Moving to a hybrid power system at DP World London was straightforward and effective. I'm not too savvy with generators, but the switch reduced fuel use and kept us running smoothly. It's a win for both operations and our environmental commitment."

Equipment List

500 kVA Generator

5000L Total Tank Capacity

30/45 Battery Pack

5 x 25 metres 240mm lug to lug cables

Change over Panel



The Plan

For the Aggregate Industries project at DP World London, as the selected power solutions provider, we developed a succinct plan for a sustainable power system transition. Our pre-site assessment addressed both current and future power load requirements, leading to the decision to install a capable 500kVA generator with a 30/45 Battery Pack.

The core of our proposal was a hybrid system, combining a traditional generator with an advanced battery pack. We incorporated both manual and automatic changeover panels to ensure seamless power transition and optimised usage according to varying plant demands.

Our plan also detailed the strategic placement of system components, efficient cable routing, risk assessments, and security measures. To guarantee system reliability and adaptability, additional units were included for redundancy. The project plan included regular system testing, meticulous refuelling, and remote monitoring to ensure safety, efficiency, and alignment with Aggregate Industries' sustainability goals.

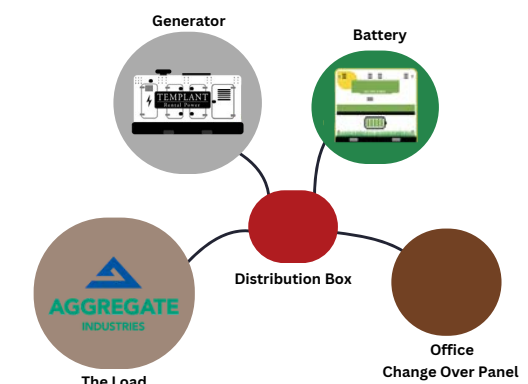
The Result

Our successful project with Aggregate Industries at DP World London is a testament to Templant Rental Power's commitment to delivering reliable, efficient, and sustainable power solutions. The project not only improved operational efficiency but also significantly enhanced sustainability for Aggregate Industries. We meticulously aligned with their immediate and long-term environmental objectives, executing a detailed and high-standard installation process that guaranteed sustainable power solutions.

A key highlight of the project was the integration of manual and automatic changeover panels, which enabled seamless transitions between generators and an advanced battery pack. This innovation not only ensured uninterrupted power but also reduced fuel consumption and CO2 emissions, marking Aggregate Industries as an eco-friendly industrial leader. This initiative set a new benchmark for energy efficiency and environmental stewardship in the industry, resulting in substantial savings and a remarkable 260.29% ROI for Aggregate Industries.

OUR HYBRID SYSTEM MODEL

The battery pack's role in fuel conservation. During off-peak hours, when power demand is lower, the battery pack takes the lead, efficiently managing the load. This not only ensures a constant power supply but also significantly cuts fuel consumption.





Contact us

Templant Hire , Highwood Rd, Essex , Chelmsford , CM13PT

Call Us : 0333 240 0872

rental@templant.co.uk | templant.co.uk

TEMPLANT
Rental Power